

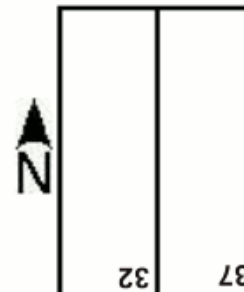
## DOORWAY TO NORWAY

MwT21



**Rom, Norway, April 13, 1940:** With Oslo secured, General Pellengahr's 196th Inf. Div. was supposed to move on to Trondheim. At the last minute they were reassigned to a secondary mission, preventing Norwegian militia from mobilizing. The 196th split into three columns and forced a crossing of the river Glama at Fossum. The middle column, under Major Wilck, pushed forward to capture the town of Askim but was viciously repulsed by "Group Gleditsch", a superb Norwegian formation well equipped with machine guns and artillery support. Stopped for now, Major Wilck consolidated his position and set up his HQ in a school near the village of Rom. Sensing an opportunity to capture Wilck's HQ, Cpt. Gleditsch threw his best troops into a counterattack.

### Board Configuration:

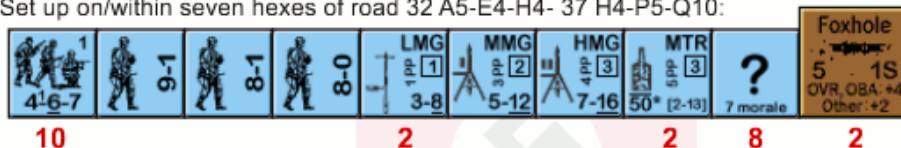


**VICTORY CONDITIONS:** The Norwegians win at Game End if they have 5 Good Order squads/equivalents on/adjacent to road 32 A5-E4-H4- 37 H4-P5-Q10 or immediately when there are no Good Order German MMC in building 32 C1/D1.

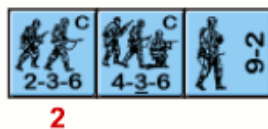
**Germans setup first. Balance:** May HIP 1 squad/equivalent and any leader/sw stacked with them.

**Elements of Regiment 362, General Pellengahr's 196th Inf. Division[ELR 4],** set up and enter as indicated: {SAN 4}

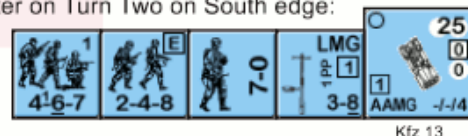
Set up on/within seven hexes of road 32 A5-E4-H4- 37 H4-P5-Q10:



**Maj. Wilck's HQ** set up in building 32 C1/D1 (see SSR 4):



Enter on Turn Two on South edge:



**Norwegians moves first. Balance:** Exchange 2 4-5-7's for 4-5-8's

1

2

3

4

5

6

END

**Company One and MG Platoon of "Group Gleditsch"[ELR: 3],** set up on/North of hexrow BB, and/or enter on West edge on/between hexes 32 S1 and 32 Y1:{SAN: 4}



### SSR:

1. EC is Ground Snow (E3.72) with no wind at start. Bore sighting is NA. Kindling is NA.
2. Only road 32 A5-E4-H4-37 H4-P5-Q10 exists. All others are Paths (B13.6). Both bridges are wooden Footbridge (B 6.44)
3. The Norwegian radio represents one module of

75mm artillery. Norwegians have Winter Camouflage (E3.712). Because they were not supplied with grenades, they receive a +1 to all Close Combat attacks.

4. German units of Maj. Wilck's HQ may not move/advance until they are in LOS of a Norwegian MMC. Thereafter they may move normally.

**AFTERMATH:** The tough Norwegians hit the Germans hard, but when they closed with the enemy they were handicapped by a lack of grenades. Soon accurate German MG fire was slicing them up and they were driven back. The ultimate brutality was the gruesome plastering of Group Gleditsch by it's own artillery. Decimated, they scattered Northeast in disorder. Two hours later Askim was abandoned. The Germans had sealed off this corner of Norway and were now free to move inland. VASL Images© Rodney Kinney. Used with Permission